



MR160 Imaging Moisture Meter

FLIR MR160

Imaging Moisture Meter

The FLIR MR160 Imaging Moisture Meter is the *first of its kind*. Equipped with a built-in thermal camera, MR160 is the *only* moisture meter with the power to show you where to measure the problem.

Featuring Infrared Guided Measurement (IGM) technology, the MR160 helps you quickly scan and target moisture issues, visually guiding you to the spot where you can make confident moisture readings.

An integrated pinless sensor and an external pin probe provide the flexibility to take either intrusive or non-intrusive measurements. Built tough with an industry-leading warranty, the MR160 can serve as your go-to troubleshooting tool right out of the box – or as the perfect complement to any high resolution thermal camera you already own – helping you find hidden moisture issues and capture reliable data more efficiently.

IDENTIFY AND VERIFY WITH ONE TOOL.

First-ever thermal imaging moisture meter

- 80 x 60 Lepton thermal imager with IGM technology
- Document thermal images and moisture readings on one screen
- Review images and generate reports with free FLIR Tools software

TROUBLESHOOT QUICKLY.

Easily investigate insulation and moisture issues

- Pinless technology for fast non-contact measurements
- External pin probe included for contact moisture measurements
- Easy targeting with laser pointer and display cross-hairs

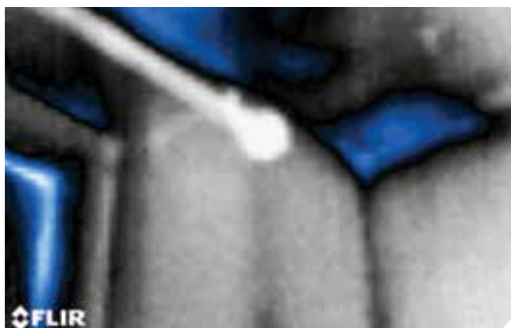
PORTABLE, TOUGH AND DURABLE.

Rugged design

- Industry-leading warranty
- Small form factor to conveniently carry with you
- Internal rechargeable battery with USB



FLIR MR160 scanning ceiling & wall joint for moisture issues.



MR160 thermal image showing clear moisture intrusion.

Specifications

FLIR MR160: Imaging Moisture Meter	
Part Number	MR160
Thermal imaging	
Imaging detector	FLIR Lepton, microbolometer focal plane array
Shutter	Integrated automatic shutter for auto flat field correction
Thermal Image resolution (W x H)	4800 pixels (80 x 60)
Spectral response	8–14 μm
Field of view (W x H)	51° x 38°
Sensitivity	<150mK
Image update speed frequency	9 Hz
Thermal image palettes	Ice
Thermal image minimum focus distance	10 cm (4")
Moisture Measurement	
Pin moisture via external probe range (accuracy)	0–100% WME ± 5%
Pin moisture groups	9 material groups
Pinless moisture range	0–100 relative measurement
Measurement resolution	0.1
Response time Pinless	100 ms
Response time Pin Mode	750 ms
General information	
Display type	320 x 240 pixel 2.3" 64K color TFT graphical display
Display resolution (W x H)	QVGA (320 x 240)
Saved Image File format	BMP with measurement values overlaid
Stored image capacity	9999 images
Laser Orientation	Single laser pointer to center of thermal image
Power requirements:	Integrated rechargeable battery
Battery Power - Continuous Run Time:	18 hours max
Battery Power - Typical Usage:	4 work weeks
Battery	3.7 V, 3000mAh (2 x 1500mAh Li-ion rechargeable batteries) rechargeable via micro USB
Certification standards	EN61326 (EMC), EN61010 (Battery + Charger), EN60825-1 Class 2 (Laser)
Agency approvals	FCC Class B, CE, UL
Available Accessories	
MR10 Protective Case	
MR05 Impact Pin Probe	



PORTLAND
 Corporate Headquarters
 FLIR Systems, Inc.
 27700 SW Parkway Ave.
 Wilsonville, OR 97070
 USA
 PH: +1 503.498.3547

BOSTON
 FLIR Systems, Inc.
 25 Esquire Road
 North Billerica, MA 01862
 USA
 PH: +1 978.901.8000

EUROPE
 FLIR Systems
 Luxemburgstraat 2
 2321 Meer
 Belgium
 PH: +32 (0) 3665 5100

SWEDEN
 FLIR Systems, AB
 Täby, Sweden
 PH: +46.8.753.2500

www.flir.com
 NASDAQ: FLIR

Equipment described herein may require US Government authorization for export purposes. Diversion contrary to US law is prohibited. Imagery for illustration purposes only. Specifications are subject to change without notice. ©2015 FLIR Systems, Inc. All rights reserved. (Updated 04/23/15)

